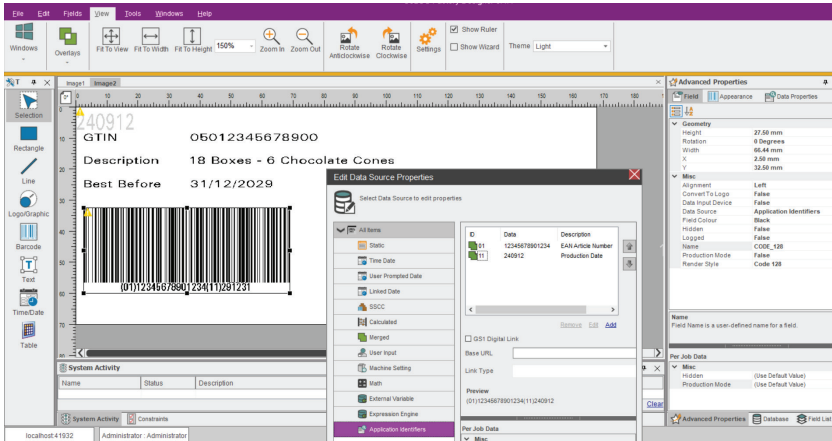




CoLOS[®] Software & Solutions Data Management



Advantages at a glance

Streamlined data management

- **Link fields** on message designs to those in ERP master product tables
- Connect **single message designs to many product SKUs** to streamline the updating of designs – one change is reused over all attached SKUs
- **Manage data internally** with in-built data management system wherever external data source is unavailable

Less repetition and rework

- Eliminate the possibility of operators entering the wrong data or making typing errors **reducing rework**
- Enhance **data integration** and consistency as the data is being fetched from a single source
- Automation ensures higher **data accuracy** in less time

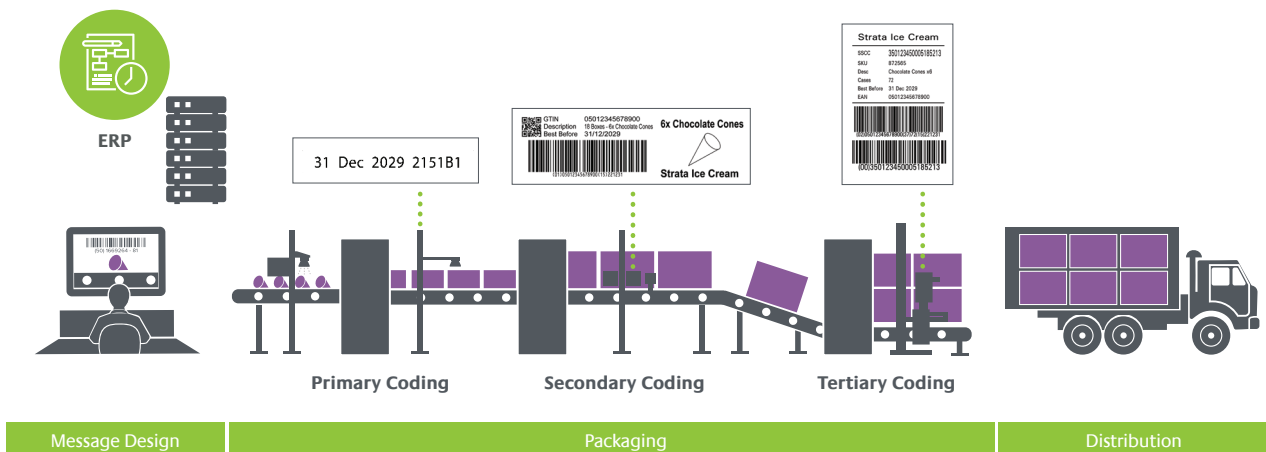
Production preparation and start-ups

Between manufacturing and selling your products, you have more important things to worry about than ensuring the right information is printed every time. You need accuracy and efficiency in your printing and coding so you can focus on producing high quality products.

CoLOS[®] Packaging Intelligence System comes with a variety of applications that can help you reduce waste from coding and marking errors, increasing line efficiency, and protecting brand value by ensuring printing compliance.

At early production preparation stage, **CoLOS[®] Data Management** enables you to link fields on message designs to those in ERP master product tables and individual designs to many stock keeping units (SKUs) while automatically populate messages with SKU data.

Easier start-ups, faster changeovers and fewer errors



Data Management



Key use case



Auto populate message templates: The operator tediously enters data to every printer manually leading to errors and low productivity. Data Management auto populates message fields using live master data from ERP/ODBC enabling better use of resources and eliminating human errors.

Specifications

Features

- Industry standard ODBC links to external data tables
- Design wizards to create remote data and job sources
- Drag and drop data sources onto message design fields
- Link to SAP, Oracle, Excel, MS SQL server and text files
- Store the entire **CoLOS®** message repository in database
- Optional SQL database for storing message data per product
- Optimized database management tools

Compatibility

- Supports all Markem-Imaje printers with remote connections, easily storing simple to complex messages, then linking to internal and external databases.

License

Part of the **CoLOS®** family of applications which are available in different bundle sizes for all your printer, line and factory solutions. Our application modules come with information and automation interface add-ons to ensure seamless integration with your existing infrastructure.

- The feature is available (in full capacity) with **CoLOS® Base**, **CoLOS® Line**, **CoLOS® Factory** and **CoLOS® OEM**.

Interface available in the following languages

- English, Czech, German, Turkish, Greek, Spanish, French, Hungarian, Romanian, Italian, Russian, Polish, Portuguese, Brazilian, Japanese, Chinese, Korean, Arabic

CoLOS® V6 is for Windows 10 32/64bit, Windows 11 64 bit, Server 2012/2016/2019/2022 64 bit
Minimum system requirements: 3GB RAM, Intel 2.6 GHz (multicore CPU preferred), 5GB free hard disk space
Production UI Browser Firefox 120.0 and onwards/Chrome 110 and onwards/Edge 110 and onwards

We reserve the right to amend the design and/or specifications of our products without notice.
© 2024 Markem-Imaje, a Dover Company. MARKEM-IMAJE and the MI MARKEM-IMAJE Logo, and CoLOS are registered trademarks of Dover Europe Sàrl in the United States, the European Union and various other countries. A1



9, rue Gaspard Monge - B.P. 110
26501 Bourg-lès-Valence Cedex France
+33 (0) 4 75 75 55 00
www.markem-imaje.com