



markem·imaje

a DOVER company



## CoLOS<sup>®</sup> Software & Solutions Mark & Read



### Product output: quality and coding

Between manufacturing and selling your products, you have more important things to worry about than ensuring the right information is printed every time. You need accuracy and efficiency in your printing and coding so you can focus on producing high quality products.

CoLOS<sup>®</sup> Packaging Intelligence System comes with a variety of applications that can help you reduce waste from coding and marking errors, increasing line efficiency, and protecting brand value by ensuring printing compliance.

To help you control your production outputs, CoLOS<sup>®</sup> Mark & Read confirms that every print is consistently present, readable and contains the right data, using a fully integrated Cognex camera.

### Select a solution for every application

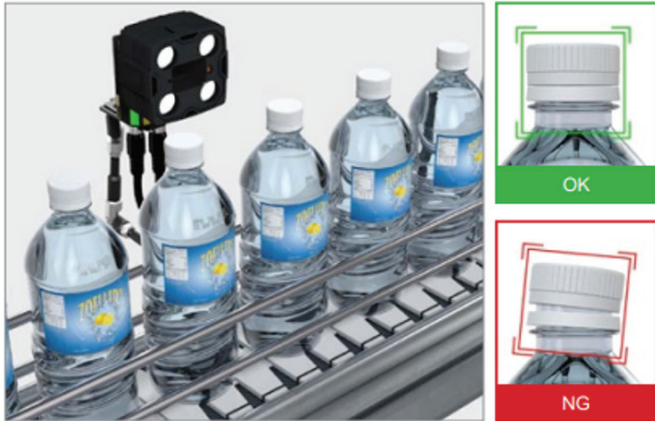
- **Entry level solution with Cognex In-Sight 2000 Series.** Check your **code presence or absence** for printed products.
- **Mid-level solution with Cognex DataMan 300 Series.** **Verify 1D/2D barcodes** for medium speed and flat surface applications, also applicable for high speed resolution.
- **High level solution with Cognex In-Sight 7000 Series.** **Verify OCR** with Cognex In-Sight 7000 for high speed and curved surfaces applications and modest print resolution purposes.
- **Advanced solution with AI based Cognex In-Sight 2800 & 3800 series.**
  - **Verify advanced OCR**, multi-line text and read 2D codes simultaneously on reflective, uneven, non-flat, and low-contrast surfaces at high speed.
  - **Categorize types of defects** such as number of scoops present/absent
  - Inspect staged products to check for cap seating, gaps, seal, numbers/set/kitted products, colors, flavors, damaged, missing, etc.
  - Inspect packaged products to **check and classify** assembly, defective labels, missing components etc.
  - Check and **verify** that **packaging material** matches the product selected on the run line using the data from ERP/ODBC systems
  - Assess accuracy of the results on code or product or packaging using **confidence score**

## Advantages at a glance

### Stop waste, inefficiency and non-compliance

- **Minimize errors, defects, and inaccuracies** in products, packaging, and labeling.
- **Ensure compliance** with regulations, industry standards, and customer requirements.
- **Reduce costs** associated with rework, recalls, and waste.
- **Protect brand reputation** by ensuring consistent, high-quality products and packaging.
- **Minimize product returns** due to errors, defects, or inaccuracies.
- **Reduce waste**, minimize packaging errors, and promote sustainability.
- **Automate verification and inspection processes** to enhance efficiency and productivity

## Inspect cap seating



## Detect presence/absence of scoop



## Key use cases



**Check:** The operator may struggle to check the presence of codes on every product which might cause missed code. Mark & Read checks the presence/absence of the code/message with the help of a camera to ensure complete coverage of products so that no product gets passed without a code. This helps in eliminating product recalls and protection of brand reputation.



**Verify:** It's practically impossible to manually verify the data in the codes on a moving line. Mark & Read verifies the correctness and accuracy of the data in the code by integrating with the IT, ERP & MES systems enabling data accuracy and eliminate printing errors.



**Inspect:** Operators may struggle with sorting and reporting the product quality and its components. Sample inspection may lead to higher number of errors. Mark & Read allows foolproof inspection with rejection on any deviation and reporting of the product quality to ensure that no product and packaging components remains unchecked before it gets to distribution. This eliminates the risk of errors at unit, case and pallet levels and ensures brand protection

## Specifications

### Features

- Fully integrated software, printers and cameras
- Verification of code presence, readability and/or accuracy
- Automatic link between printed fields and inspected fields
- Simultaneously download the same production job to printers and cameras
- Performance logging of good and bad reads
- Signal output to reject products with bad codes
- Latest captured images viewable in **CoLOS**<sup>®</sup> Production User Interface
- 7 fully qualified Cognex camera models for your exact application needs
- Full range of power, lighting and connection options available

### Compatibility

- Supports all Markem-Imaje printers connected to **CoLOS**<sup>®</sup>, easily storing simple to complex messages then linking to internal and external databases.

### License

Part of the **CoLOS**<sup>®</sup> family of applications which are available in different bundle sizes for all your printer, line and factory solutions. Our application modules come with information and automation interface add-ons to ensure seamless integration with your existing infrastructure.

- The feature is available (in full capacity) with **CoLOS**<sup>®</sup> Base, **CoLOS**<sup>®</sup> Line, **CoLOS**<sup>®</sup> Factory.

### Interface available in the following languages

- English, Czech, German, Turkish, Greek, Spanish, French, Hungarian, Romanian, Italian, Russian, Polish, Portuguese, Brazilian, Japanese, Chinese, Korean, Arabic

**CoLOS**<sup>®</sup> V6 is for Windows 10 32/64bit, Windows 11 64 bit, Server 2012/2016/2019/2022 64 bit  
 Minimum system requirements: 3GB RAM, Intel 2.6 GHz (multicore CPU preferred), 5GB free hard disk space  
 Production UI Browser Firefox 120.0 and onwards/Chrome 110 and onwards/Edge 110 and onwards

We reserve the right to amend the design and/or specifications of our products without notice.  
 © 2024 Markem-Imaje, a Dover Company. MARKEM-IMAJE and the MI MARKEM-IMAJE Logo, and CoLOS are registered trademarks of Dover Europe Sàrl in the United States, the European Union and various other countries. E1



markem·imaje  
 a DOVER company

9, rue Gaspard Monge - B.P. 110  
 26501 Bourg-lès-Valence Cedex France  
 +33 (0) 4 75 75 55 00  
[www.markem-imaje.com](http://www.markem-imaje.com)