



# CoLOS<sup>®</sup> Software & Solutions Printer Performance



## Production performance

Between manufacturing and selling your products, you have more important things to worry about than ensuring the right information is printed every time. You need accuracy and efficiency in your printing and coding so you can focus on producing high quality products.

**CoLOS<sup>®</sup>** Packaging Intelligence System comes with a variety of applications that can help you reducing waste from coding and marking errors, increasing line efficiency and protecting brand value by ensuring printing compliance.

Once production is up and running, **CoLOS<sup>®</sup> Printer Performance** enables you to get immediate alerts for printer problems to your mobile devices and instantaneous access to printer performance indicators and dashboards.

## Advantages at a glance

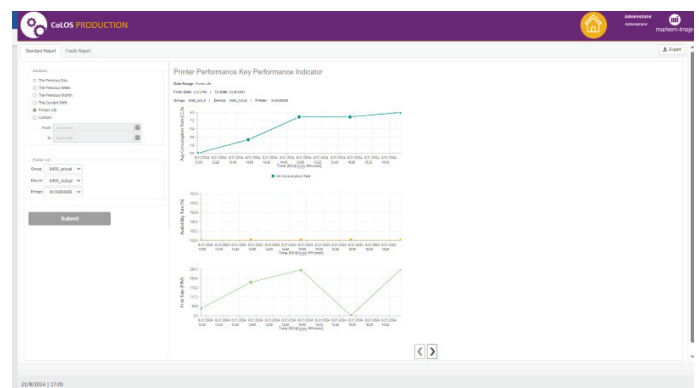
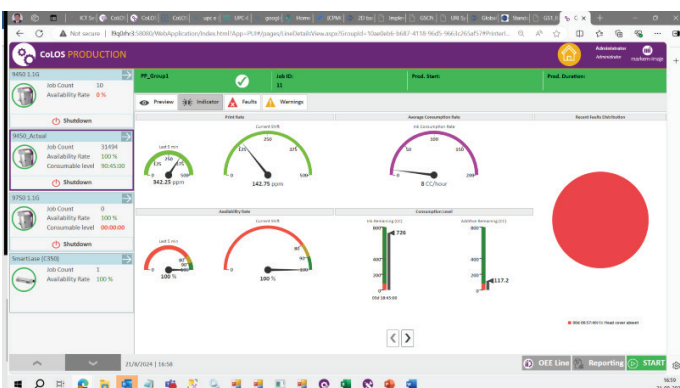
### Instant visibility of printer performance

- **Optimized dashboards.** Access to your marking and coding activities printer performance from one **comprehensive dashboard.**
- **Reduced running costs.** Anticipate changing consumables and identify low printer availability. Review and analyze your historical production data with exported data files.
- Access your printer **data and performance dashboard** from any compatible user interface or mobile device connected to your factory network.

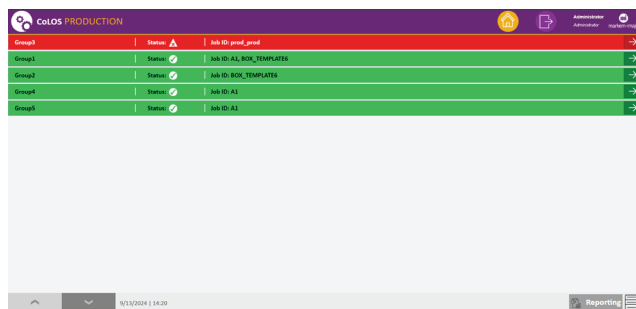
### Greater uptime

- **Optimized printer performance.** Check displays and logs printer pack-rate, availability and consumable consumption no matter where your are.
- Get immediate event-based **SMS/Email alerts** when an incident occurs.
- **Improved operational performance.** Identify existing bottlenecks and performance losses due to usage issues to implement process improvements on continuous basis.

## Visibility to printer faults/warnings in real-time



# Printer Performance



Printer 1

Printer 2

Printer 3

## Key use cases



**Real-time visibility to all printers:** It's quite hectic for the operators to examine and verify the status of every printer manually by visiting the printers. This may lead to undesirable downtimes and slower production. Printer performance addresses this by providing visibility to all the printers on the line at a single location to the operator in real time. This enables the operators to act proactively based on the faults or warning indicated to avoid downtimes and save cost.



**Comprehensive reports for analysis:** Plant managers struggle to analyse data with multiple reports regarding production, printer performance, KPIs, operators performance etc. Printer performance allows them to view comprehensive reports in the combination they'd like to analyse in a single window resulting in better visibility, quicker analysis and decisions making.

## Specifications

### Features

- Monitor availability, consumables and production speeds
- Historical reporting of performance parameters and errors
- Dashboards available on phone and tablet browsers
- Secure connection of mobile devices behind the firewall
- Shift-based setup for alert contacts
- Fully configurable SMS alert messages
- Email alerts using SMTP connection

### Compatibility

- Supports all Markem-Imaje printers with remote connections, easily storing simple to complex messages, then linking to internal and external databases.

### License

Part of the **CoLOS®** family of applications which are available in different bundle sizes for all your printer, line and factory solutions. Our application modules come with information and automation interface add-ons to ensure seamless integration with your existing infrastructure.

- The feature is available (in full capacity) with **CoLOS® Base**, **CoLOS® Line** and **CoLOS® Factory**

### Interface available in the following languages

- English, French, German, Spanish, Italian, Arabic, Polish, Korean, Czech, Greek, Hungarian, Russian, Romanian, Turkish, Chinese, Japanese, and Portuguese

CoLOS® V6 is for Windows 10 32/64bit, Windows 11 64 bit, Server 2012/2016/2019/2022 64 bit  
Minimum system requirements: 3GB RAM, Intel 2.6 GHz (multicore CPU preferred), 5GB free hard disk space  
Production UI Browser Firefox 120.0 and onwards/Chrome 110 and onwards/Edge 110 and onwards

We reserve the right to amend the design and/or specifications of our products without notice.  
© 2024 Markem-Imaje, a Dover Company. MARKEM-IMAJE and the MI MARKEM-IMAJE Logo, and CoLOS are registered trademarks of Dover Europe Sàrl in the United States, the European Union and various other countries. D1



markem·imaje  
a DOVER company

9, rue Gaspard Monge - B.P. 110  
26501 Bourg-lès-Valence Cedex France  
+33 (0) 4 75 75 55 00  
[www.markem-imaje.com](http://www.markem-imaje.com)